

WHEREVER I LAY MY HAT (THAT'S MY HOME)

From The 1983 Album "NO PARLEZ" (Extended Version) by Paul Young

as played by Pino Palladino

transcribed by **manfredsauer**

Medium Pop ♩ = 89

manfredsauerbass.de

INTRO

The Intro section consists of two staves of music. The first staff begins with a whole rest, followed by a series of eighth and quarter notes, including some beamed eighth notes and a dotted quarter note. The second staff continues with similar rhythmic patterns, featuring eighth notes, quarter notes, and a final half note.

VERSE I

Verse I is a single staff of music featuring a simple bass line of half notes: G2, F2, E2, D2, C2, B1, A1, G1.

CHORUS I

Chorus I consists of two staves. The first staff has a half note G2, a half note F2, a quarter note G2, and a quarter note F2. The second staff continues with a half note E2, a half note D2, a quarter note C2, and a quarter note B1.

VERSE II

Verse II consists of two staves. The first staff has a half note G2, a half note F2, a quarter note G2, and a quarter note F2. The second staff continues with a half note E2, a half note D2, a quarter note C2, and a quarter note B1.

CHORUS II

Chorus II consists of two staves. The first staff has a half note G2, a half note F2, a quarter note G2, and a quarter note F2. The second staff continues with a half note E2, a half note D2, a quarter note C2, and a quarter note B1.

BRIDGE

The Bridge section is a single staff of music featuring a rhythmic pattern of eighth notes and quarter notes: G2, F2, E2, D2, C2, B1, A1, G1.

Two staves of musical notation in bass clef, B-flat major, 4/4 time. The first staff contains a sequence of eighth and quarter notes. The second staff contains a more complex sequence with sixteenth notes and slurs. Asterisks are placed under certain notes in both staves.

VERSE III

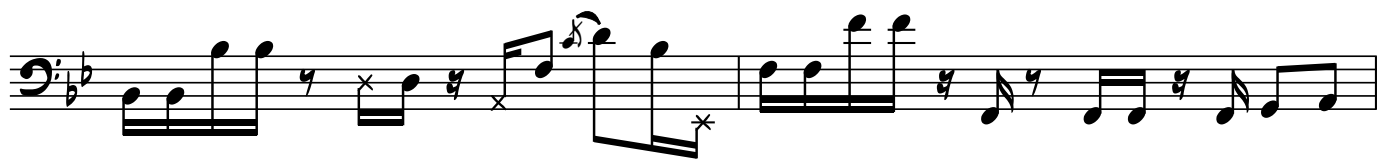
Two staves of musical notation in bass clef, B-flat major, 4/4 time. The first staff contains a sequence of quarter and eighth notes. The second staff contains a sequence of quarter and eighth notes with a slur. Asterisks are placed under certain notes.

CHORUS III

Three staves of musical notation in bass clef, B-flat major, 4/4 time. The first staff features a long note with a fermata and a slur. The second staff contains a sequence of quarter and eighth notes with a slur. The third staff contains a sequence of quarter and eighth notes with a slur. Asterisks are placed under certain notes.

OUTRO

Four staves of musical notation in bass clef, B-flat major, 4/4 time. Each staff contains a sequence of quarter and eighth notes with various rhythmic patterns. Asterisks are placed under certain notes.



This page contains ten staves of musical notation for a bass line. The notation is written in a single system and includes various rhythmic values, accidentals, and articulation marks. The first staff begins with a treble clef, a key signature of one flat (B-flat), and a 4/4 time signature. The notation consists of eighth and sixteenth notes, often beamed together, with various rests and accidentals. Some notes are marked with an 'x' or an asterisk, likely indicating specific performance techniques or articulation. The piece concludes with a double bar line at the end of the tenth staff.